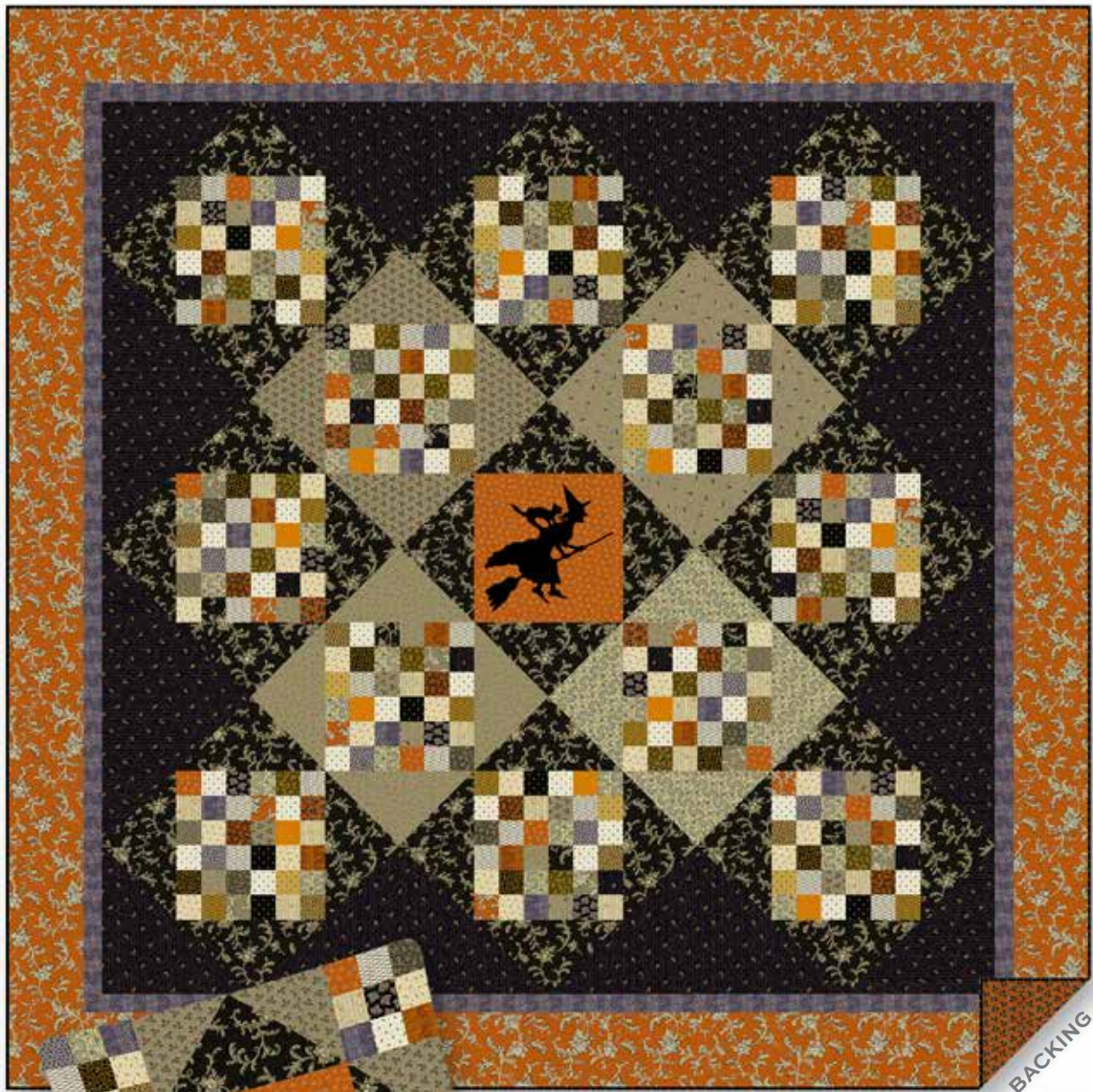


Witchy Couture

RENÉE NANNEMAN



Witchy Ride Quilt designed by: **Renée Nanneman**

Quilt Size: **87" x 87"**

Wall Quilt / Pillow Size: **24" x 24"**

Skill Level: **Intermediate**

Witchy Ride

Introducing Andover Fabrics new collection: **WITCHY COUTURE** by Renée Nanneman

Quilt designed by Renée Nanneman

Quilt finishes 87" x 87"

Pillow/Wall Quilt finishes 24" x 24"

A high-flying witch and her black cat are silhouetted in the center of this enchanting (enchanted?) quilt. If you wish to make it a tribute to fall rather than Halloween, simply replace the witch applique with another pieced checkerboard block. Directions for a smaller wall quilt or pillow are given.

Cutting Directions

Note: Read assembly directions before cutting patches. All measurements are cut sizes and include ¼" seam allowances. A fat ⅛ is a 9" x 20"-22" cut of fabric. A fat ¼ is an 18" x 20"-22" cut. Borders are cut the exact lengths required plus ¼" seam allowances. WOF designates the width of fabric from selvedge (approximately 42" wide).

Cutting for the 87" Quilt

Fabric A

Cut (18) squares 9½", cut in half diagonally to make 36 half-square triangles

Fabric B

Cut (2) top/bottom borders 6½" x 87½", cut lengthwise
Cut (2) side borders 6½" x 75½", cut lengthwise

Fabric C

Cut (8) strips 2" x WOF, pieced to make the following:
2 top/bottom borders 2" x 75½"
2 side borders 2" x 72½"

Fabric D

Cut (2) squares 25½", cut in half diagonally twice to make 8 quarter-square triangles
Cut (2) squares 13", cut in half diagonally to make 4 half-square triangles

Fabric E

Cut (1) square 12½"

Fabric F

Cut (1) witch applique (Read Step 5)

4 Tan From each: (Read Step 1)

Cut (2) squares 9½", cut in half diagonally to make (4) half-square triangles (16 triangles total)

Fabric Requirements

Yardage Fabric

Fabric A	blocks	1½ yards	1115-K
Fabric B	blocks, border	2½ yards	1115-O
Fabric C	border	½ yard	1118-P
Fabric D	setting	1½ yards	1119-K
Fabric E	center	fat ¼	1120-O
Fabric F	witch	fat ¼	CS-10-Black
4 Tan	blocks	fat ¼ each	
	1116-NL	1118-L	1119-N 1121-N
5 Light	blocks	fat ¼ each	
	1115-N	1119-L	1121-L 1122-L
	1123-L		
14 Dark	blocks	fat ⅛ each	
	1116-N	1116-O	1116-P 1117-N
	1117-O	1117-Y	1118-O 1120-P
	1120-Y	1121-O	1122-N 1122-Y
	1123-K	1123-Y	
Binding		¾ yard	1123-K
Backing		8 yards	1116-O

Also needed: 12" square of fusible webbing (lightweight or heavyweight)

Yardage is sufficient to make the wall quilt/pillow with this additional yardage:

1120-O: Fat ¼ yard
1116-NL: Fat ¼ yard
1123-K (Binding): ¼ yard (not needed for pillow)

5 Light From each: (Read Step 1 before cutting)
Cut (approx. 30-40) squares 2½" (216 total)

14 Dark From each: (Read Step 1 before cutting)
Cut (12-18) squares 2½" (216 total)

Binding

Cut (9) strips 2½" x WOF for binding

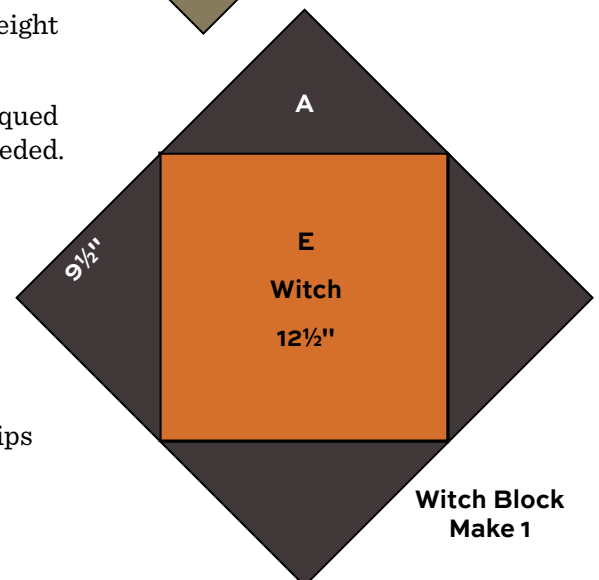
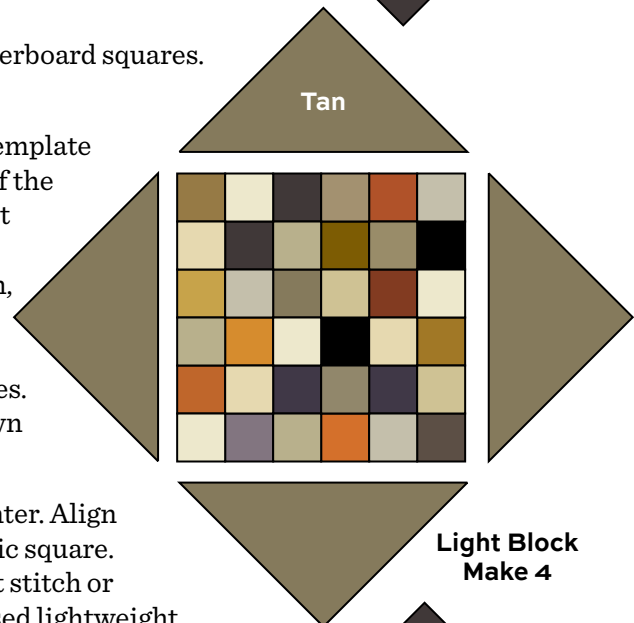
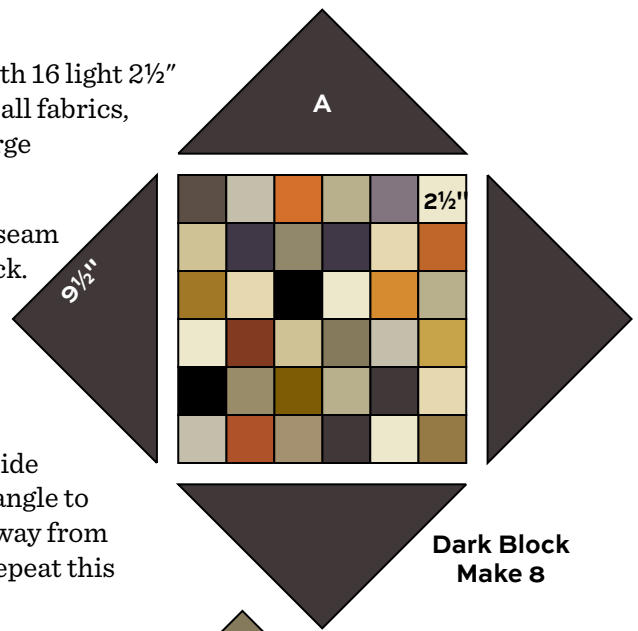
Backing

Cut (3) lengths 33" x 99", pieced to fit quilt top with overlap on all sides

Witchy Ride

Making the Quilt

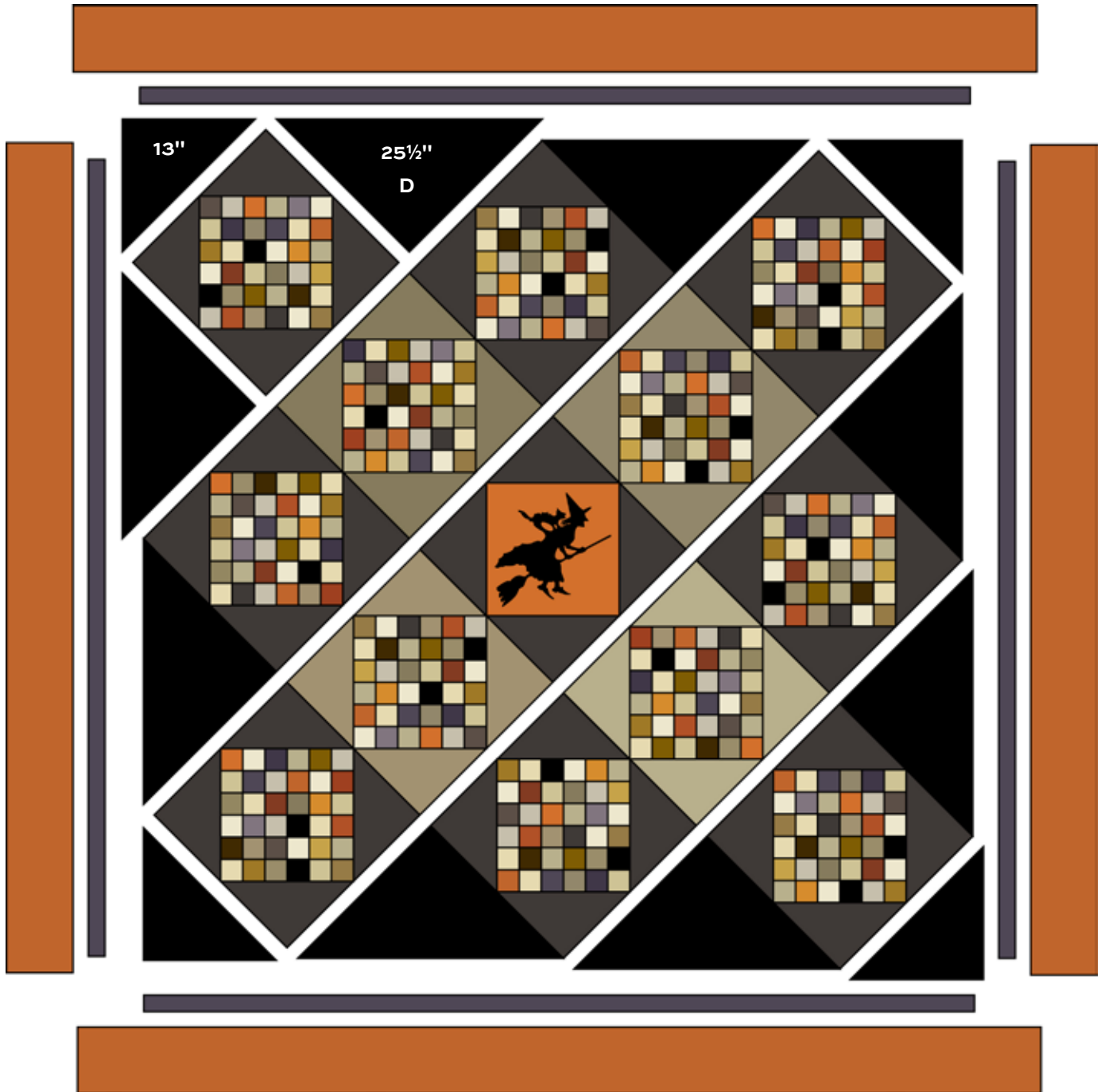
1. Each Dark and Light block has a checkerboard center made with 16 light $2\frac{1}{2}$ " squares and 16 dark $2\frac{1}{2}$ " squares. Feel free to cut squares from all fabrics, including leftovers from the outer border, the dark prints in large triangles, and 4 tan prints.
2. Join 3 light and 3 dark $2\frac{1}{2}$ " squares in alternating order. Press seam allowances toward the dark squares. Make 6 rows for each block. Do not allow any print to be next to itself. Join the rows as shown in the block diagram. The square should measure $12\frac{1}{2}$ ". If it does not, adjust your stitching or pressing technique. Make 12 checkerboard squares, each different.
3. Refer to the Dark Block diagram. Mark the middle of the long side of each Fabric A triangle. Matching centers, sew a Fabric A triangle to each side a checkerboard square. Press the seam allowances away from the center. The block should measure $17\frac{1}{2}$ ". Trim as needed. Repeat this step to make 8 Dark Blocks.
4. Likewise, sew Tan triangles to sides of remaining checkerboard squares. Make 4 Light Blocks.
5. These directions are for fusible applique, so the witch template is printed in reverse. If you wish to stitch the raw edge of the applique, use a lightweight fusible webbing. If you do not plan to stitch it, use a heavyweight fusible. On the paper side of the fusible webbing, trace the 2 parts of the witch, aligning the dashed lines. Cut around the witch loosely. Follow manufacturer's directions to fuse the webbing to the back side of the black fabric. Cut out along the lines. Use sharp-pointed scissors to cut out the little bits shown in gray on the pattern.
6. Fold the Fabric E $12\frac{1}{2}$ " square in quarters to find the center. Align the center mark on the witch with the center of the fabric square. Press the witch to the background square. Use a straight stitch or decorative stitch along the edge of the applique if you used lightweight fusible.
7. Refer to Step 3 and sew Fabric A triangles to the sides of the appliqued square. The Witch Block should measure $17\frac{1}{2}$ " square. Trim as needed.
8. Referring to the Quilt Assembly, arrange the blocks and Fabric D quarter-square triangles in diagonal rows, noting placement of the 4 Light Blocks and the Witch Block. Join the blocks and Fabric D triangles into rows. Join the rows. Finally, sew Fabric D half-square triangles in the corners. Trim the outer edges of the quilt evenly if needed.
9. Join Fabric C border strips to the sides of the quilt, and longer strips to the top and bottom. Repeat this step to add Fabric B borders.



Witchy Ride

Finishing the Quilt

10. Layer the quilt with batting and backing and baste. Quilt in the ditch around borders and patches. Quilt around the witch applique. Quilt the larger triangles as you wish. Bind to finish the quilt.



Quilt Assembly

Witchy Ride

Cutting for the 24" Wall Quilt or Pillow

Fabric A

Cut (2) squares 9½", cut in half diagonally to make
4 half-square triangles

Fabric E

Cut (1) square 12½"

Fabric F

Cut (1) witch applique (Read Step 5)

1 Tan

Cut (4) squares 6⅞", cut in half diagonally to make
(8) half-square triangles

5 Light

Cut (16) total squares 2½"

14 Dark

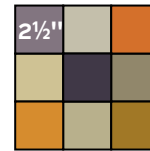
Cut (20) total squares 2½"

Binding

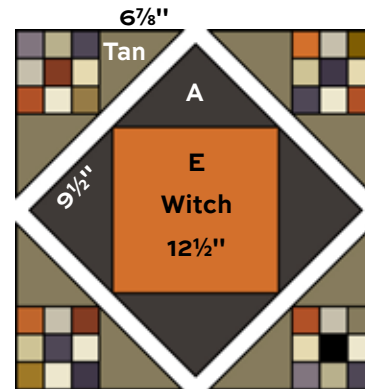
Cut (3) strips 2½" x WOF (not needed for pillow)

Backing

Cut (1) length 30" x 30"



9 Patch Block
Make 4



Pillow or Wall Quilt

Making the Wall Quilt or Pillow

1. Refer to steps for the 87" quilt to make a Witch Block.
2. Join 5 dark 2½" squares with 4 light 2½" squares to make a 9-Patch Block. Make 4.
3. Refer to the Wall Quilt diagram. Sew 2 tan 6⅞" triangles to sides of a Nine Patch to make a unit. Make 4 units.
4. Sew the units to the sides of the Witch Block.

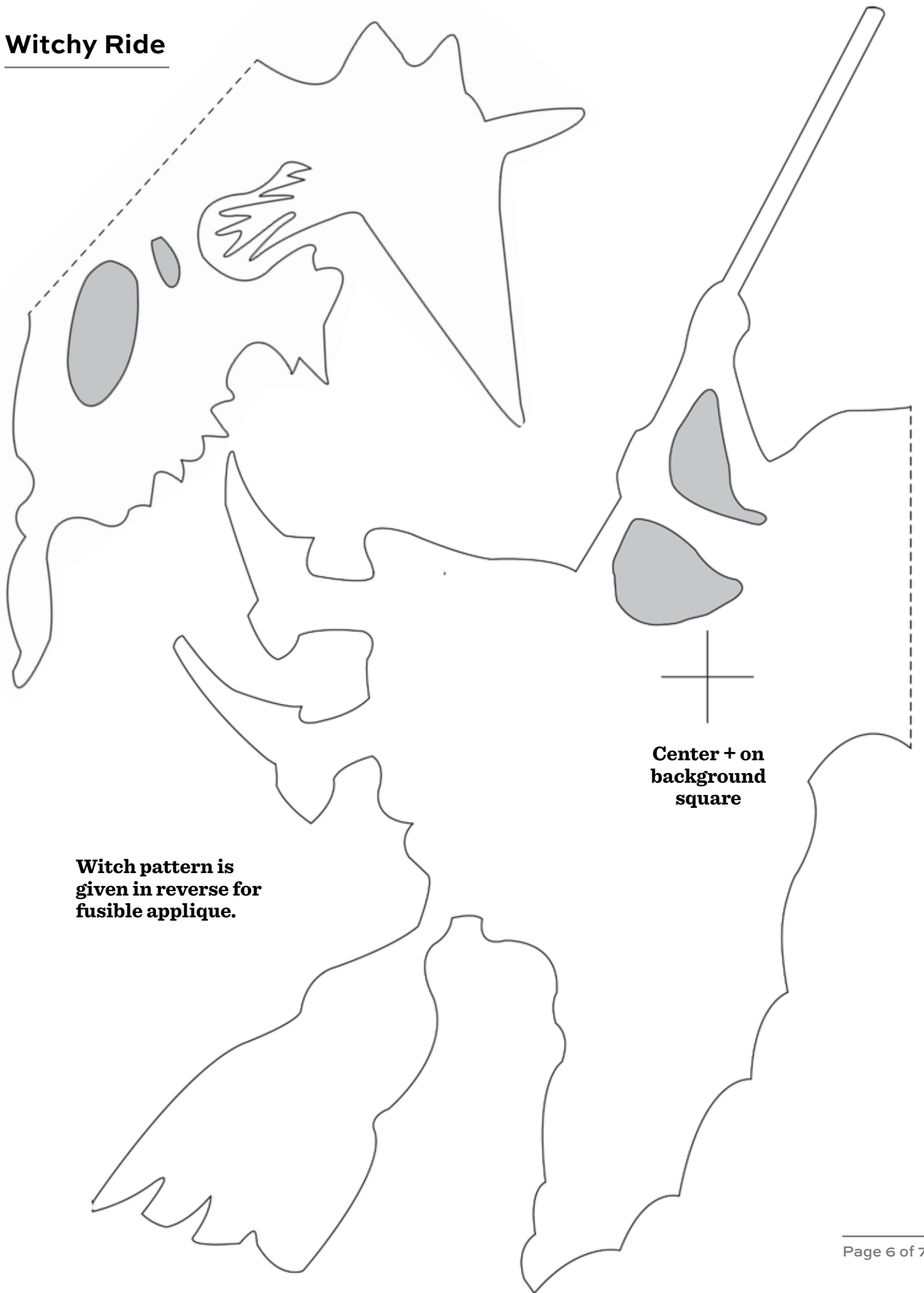
Finishing the Wall Quilt

5. Refer to Step 10 for the large quilt to finish.

Finishing the Pillow

1. If you wish to quilt the pillow top, layer it with batting and an inner lining. Quilt as described in Step 10 of the large quilt.
2. Position the pillow front on top of the backing, right sides together. Pin all around. The backing should be an inch larger than the pillow top. Stitch in a ¼" seam, leaving a generous opening along one side, not at the corner. Backstitch at the opening to secure. Trim the backing even with the pillow front, and trim the corners. Turn right side out and use a knitting needle or chopstick from the inside to push the seam out so there are no puckers. Press the edges. Lightly stuff with polyfil or a pillow form. Stitch the opening closed.

Witchy Ride



Witch pattern is given in reverse for fusible applique.

Center + on background square

Witchy Couture RENÉE NANNEMAN



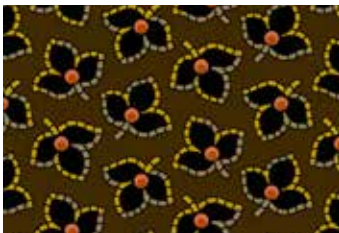
1115-K



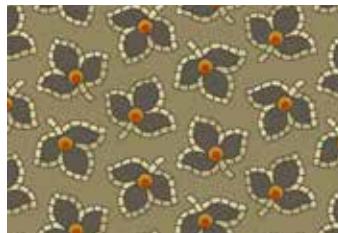
1115-N



1115-O



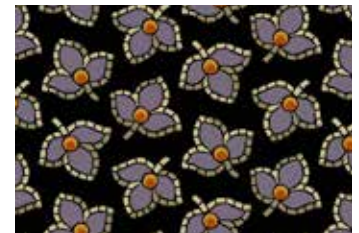
1116-N



1116-NL



1116-O



1116-P



1117-N



1117-O



1117-Y



1118-L



1118-O



1118-P



1119-K



1119-L



1119-N



1120-O



1120-P



1120-Y



1121-L



1121-N



1121-O



1122-L



1122-N



1122-Y



1123-K



1123-L



1123-Y



CS-10-Black

Additional fabric
from **Century Solids**
by Andover Fabrics

All fabrics are used
in quilt pattern.

Fabrics shown are 50%
of actual size.